

World Class Intelligent Solutions ▶ Designed & Manufactured in Australia ▶ Used Throughout The World

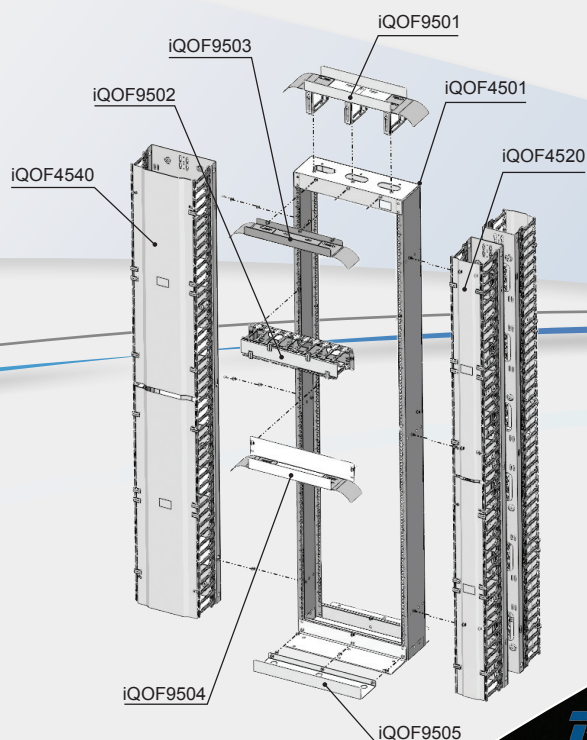
## DATA CENTRE ENCLOSURES & OPENFRAME SYSTEMS

### iQ Open Frame Series

The iQ Open Frame series has been designed specifically for high density patching applications associated with Data Centres.

There are several cable management options available utilising the Rack Technologies T-Finger design. The vertical cable managers are available in widths of 150mm, 300mm and 400mm.

The iQ Open Frame Rack can be bayed as many times as required in conjunction with the vertical cable management system. The 2-way hinged door cover design allows for ease of cable management as well as a neat and tidy finish.





# iQ Open Frame Components



## 38RU VERTICAL CABLE MANAGEMENT

- > All vertical cable management channels come with a two-piece dual-hinged covers



Part No.	iQOF3820	iQOF3840	iQOF3850
Description	38RU - 150mm (w) 93mm T-Finger	38RU - 300mm (w) 93mm T-Finger	38RU - 400mm (w) 93mm T-Finger
Part No.	iQOF3820-150	iQOF3840-150	iQOF3850-150
Description	38RU - 150mm (w) 146mm T-Finger -150 denotes longer finger	38RU - 300mm (w) 146mm T-Finger -150 denotes longer finger	38RU - 400mm (w) 143mm T-Finger -150 denotes longer finger

## 45RU VERTICAL CABLE MANAGEMENT

- > All vertical cable management channels come with a two-piece dual-hinged covers



Part No.	iQOF4520	iQOF4540	iQOF4550
Description	45RU - 150mm (w) 93mm T-Finger	45RU - 300mm (w) 93mm T-Finger	45RU - 400mm (w) 93mm T-Finger
Part No.	iQOF4520-150	iQOF4540-150	iQOF4550-150
Description	45RU - 150mm (w) 146mm T-Finger -150 denotes longer finger	45RU - 300mm W 146mm T-Finger -150 denotes longer finger	45RU - 400mm (w) 143mm T-Finger -150 denotes longer finger

## CABLE SLACK SPOOL

- > Supports and ensures bending radii are met
- > Neatly attaches to vertical cable managers & cable hanging bracket



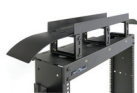
Part No.	iQOF9506	iQOF9507	iQOF9508
Description	70mm (L)	140mm (L)	210mm (L) (For extended finger & brackets only)

## HORIZONTAL CABLE MANAGEMENT

- > Supports and ensures bending radii are met
- > Routing of cable to maximise capacity



Part No.	iQOF9509	iQOF9502	iQOF9512
Description	1RU 93mm T-Finger 130mm Usable Depth	2RU 93mm T-Finger 130mm Usable Depth	4RU 93mm T-Finger 130mm Usable Depth
Part No.	iQOF9509-150	iQOF9502-150	iQOF9512-150
Description	1RU 146mm T-Finger 195mm Usable Depth -150 denotes longer finger	2RU 146mm T-Finger 195mm Usable Depth -150 denotes longer finger	4RU 146mm T-Finger 195mm Usable Depth -150 denotes longer finger



Part No.	iQOF9501	iQOF9503	iQOF9504	iQOF9505
Description	Adjustable Top Water Fall Tray (Height adjustable to 60mm)	Top Water Fall Support Tray (To route leads between managers)	2RU Horizontal Cable Tray (To route leads between managers)	Bottom Cable Tray (Used to take up the slack of leads)

## 2 & 4 Post Open Frame

The iQ Open Frame 2 and 4 Post Rack is designed to accommodate server/active equipment while still providing a high cable capacity or cable management solution. The iQ vertical cable management channels can be fitted to 2 and 4 post open frames both front & rear, as well as being bayed together with another 2-post or 4-post rack.

Part Number	Description
iQOF3801	38RU 1748 (h) x 515 (w) x 145 (d)
iQOF4501	45RU 2150 (h) x 515 (w) x 145 (d)

## Cable Management

The T-Finger Vertical Cable Management System is designed to handle high density cabling for termination or patching applications.

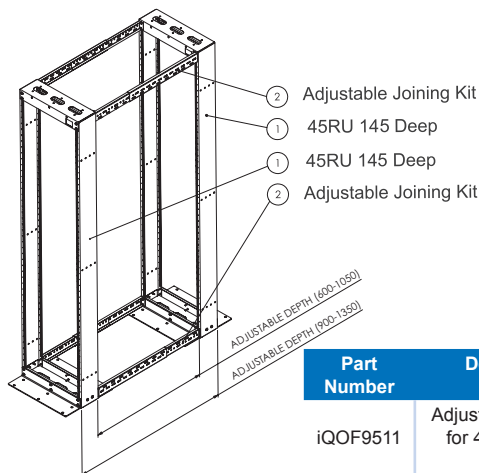
This system ensures neat cabling as well as adherence to bend radius requirements. A hinged door cover conserves any unsightly cables and has the ability to swing left or right for ease of cable installation.

The T-Fingers on our managers are mounted in 2RU increments and can be removed to allow the bending and entry of larger cable bundles via the top or bottom, left or right. The fingers are available in 2 (two) lengths - 93mm and 146mm.



## Adjustable Joiner Kit

The adjustable joiner kit is used to join the frames together, turning a 2-post frame into a 4-post frame. The kit allows you to manually adjust the depth of the rack to accommodate your equipment.



Part Number	Description
iQOF9511	Adjustable Joiner Kit for 4-Post Frame Set of 4

## Open Frame Foot Print

